

INSTALLATION INSTRUCTIONS

NECK COVERS FOR FL SOFTAIL MODELS

7833

THANK YOU FOR CHOOSING KURYAKYN!

Protect yourself and others from possible injury and property damage or loss. Pay close attention to all instructions, warnings, cautions, and notices regarding the installation, use, and care of this product.

WARNING THIS INDICATION ALERTS YOU TO THE FACT THAT IGNORING THE CONTENTS DESCRIBED HEREIN CAN RESULT IN POTENTIAL DEATH OR SERIOUS INJURY.

CAUTION THIS INDICATION ALERTS YOU TO THE FACT THAT IGNORING THE CONTENTS DESCRIBED HEREIN CAN RESULT IN MINOR OR MODERATE POTENTIAL INJURY.

NOTICE THIS INDICATION ALERTS YOU TO THE FACT THAT IGNORING THE CONTENTS DESCRIBED HEREIN MAY NEGATIVELY AFFECT PRODUCT PERFORMANCE AND FUNCTIONALITY OR DAMAGE THE PRODUCT ITSELF OR THE PRODUCT TO WHICH IT IS BEING ATTACHED.

ENSURE THAT THE FOLLOWING PARTS HAVE BEEN INCLUDED IN THE KIT:

- | | | | |
|---|------------------------------|---|---|
| 1 | Right Side Neck Cover | 1 | Hardware Kit (CONTINUED), containing: |
| 1 | Left Side Neck Cover | 1 | 3/8"-16 x 4 3/8" Double Threaded Tank Bolt |
| 1 | Hardware Kit containing: | 2 | 3/8" x 0.812" x 0.120" Spacers (NOT USED) |
| 1 | 4" Corrugated Wire Cover | 2 | #8-32 x 7/16" Socket Head Cap Screws (SHCS) |
| 4 | Nylon Cable Ties | 2 | #8 Split Lock Washers |
| 1 | Cord Keeper | 2 | 3/8" Flat Washer |
| 1 | 8-32 x 1.86" Hex Coupler Nut | 2 | 3/8"-16 High Crown Acorn Nut |

YOU WILL ALSO NEED:

Set of Hex Wrenches, Combination Wrenches or Socket Set and Ratchet

NOTICE THESE INSTALLATION INSTRUCTIONS CONTAIN IMPORTANT INFORMATION. ENSURE THE END USER RECEIVES THIS COPY AND IS AWARE OF ITS IMPORTANCE FOR FUTURE USE.

STEP 1 Read and understand all steps in the instructions before starting the installation. Park the motorcycle on a hard, level surface and turn off the ignition. Let motorcycle cool.

CAUTION AVOID DAMAGE TO THE MOTORCYCLE. PROTECT PAINTED SURFACES WITH A SOFT CLOTH OR BLANKET.

STEP 2 Remove the front gas tank mounting nut and bolt as shown in PIC.1.

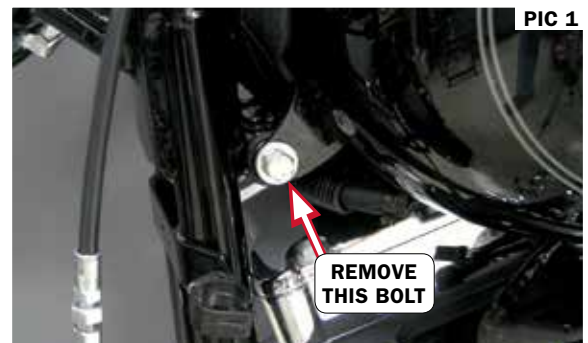
STEP 3 Install the hex coupler nut to the right side neck cover using a #8-32 x 7/16" SHCS screw and #8 split lock washer as shown in PIC.2; do not tighten the screw yet.

STEP 4 Insert the 3/8"-16 x 4 3/8" Double Threaded Tank Bolt through the gas tank mounting holes.

STEP 5 Place the right side cover in place, over the tank-mounting bolt. Make sure that the wires are behind the cover and not being pinched. The throttle cables remain outside of the cover and lie in the notch at the back of the neck cover as shown in PIC.3.

NOTICE SECURE ALL WIRING AWAY FROM ANY MOVING PARTS, PINCH POINTS OR EXTREME HEAT. KURYAKYN WILL NOT WARRANTY ANY ELECTRICAL COMPONENT THAT FAILS DUE TO PINCHED, CRIMPED, BROKEN, ABRADED, MELTED OR FRAYED WIRES.

STEP 6 Secure the neck cover using the 3/8" Flat Washer (thin) and 3/8"-16 High Crown Acorn Nut from the hardware kit to the gas tank mounting bolt; do not tighten at this time.



PIC 1

8-32 SHCS AND #8 LOCKWASHER

PIC 2



HEX COUPLER

KURYAKYN.COM

866 277 9598 | INFO@KURYAKYN.COM

454 COUNTY ROAD VV SOMERSET, WI 54025

INSTALLATION INSTRUCTIONS

NECK COVERS FOR FL SOFTAIL MODELS

7833

-CONTINUED-

STEP 7 On ABS models: Remove the wire tie and clip that hold the ABS wire to the brake line on the right side. PIC 4 Install the corrugated wire cover over the ABS line and route it next to the wire harness to inside of the back panel of the headlight cowl. PIC 5 You will need about an inch of the corrugated cover sticking beyond the Chrome Neck Cover opening. PIC 6 You may use the supplied cable ties to tie this wire to the main harness. Install the Cord keeper to the inside of the headlight cowl back panel and hook it around the ABS wire. PIC 6 Place the left cover in place over the tank-mounting bolt. Make sure that the wires are behind the cover and not being pinched. The clutch cable remains on the outside of the neck cover.

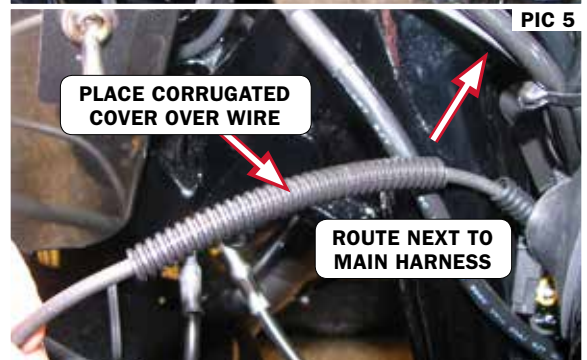
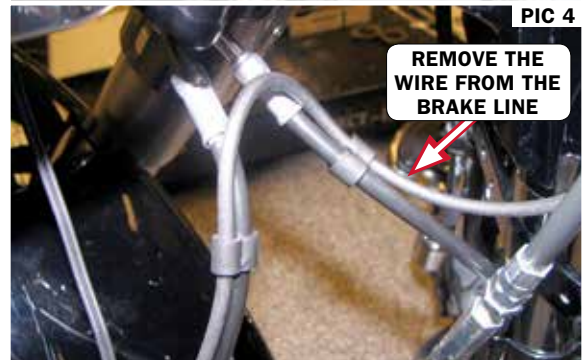
STEP 8 Attach the left cover to the hex coupler nut using a #8-32 x 7/16" SHCS screw and #8 split lock washer, do not tighten at this time.

STEP 9 Place the 3/8" Flat Washer (thin) and 3/8"-16 High Crown Acorn Nut from the hardware kit to the gas tank mounting bolt; do not tighten at this point.

STEP 10 Tighten the #8-32 x 7/16" SHCS screws, from Step 8, being careful not to over tighten them.

STEP 11 Tighten the Acorn nuts on the gas tank-mounting bolt.

STEP 12 Turn the handlebars in both directions to their full stop position to make sure that the clutch and throttle cables are not pinched or stretched. On ABS models, check that the rerouted ABS wire moves freely when the handlebars are turned lock to lock and does not get pinched in the fork stop.



WARNING STRETCHED OR PINCHED CABLES CAN CAUSE LOSS OF CONTROL THAT COULD RESULT IN SEVERE INJURY OR DEATH.

NOTICE IT IS THE INSTALLER'S RESPONSIBILITY TO ENSURE THAT ALL OF THE FASTENERS (INCLUDING PRE-ASSEMBLED) ARE TIGHTENED BEFORE OPERATION OF THE MOTORCYCLE. KURYAKYN WILL NOT PROVIDE WARRANTY COVERAGE ON PRODUCTS OR COMPONENTS LOST DUE TO IMPROPER INSTALLATION OR LACK OF MAINTENANCE. PERIODIC INSPECTION AND MAINTENANCE ARE REQUIRED ON ALL FASTENERS.

KURYAKYN.COM

INSTALLATION INSTRUCTIONS

NECK COVERS FOR FL SOFTAIL MODELS

7833

-CONTINUED-

LIMITED WARRANTY

Kuryakyn warrants that any Kuryakyn products sold hereunder, shall be free of defects in materials & workmanship for a period of one (1) year from the date of purchase by the consumer excepting the following provisions:

1. Kuryakyn shall have no obligation in the event the customer is unable to provide a receipt showing the date the customer purchased the product(s).
2. The product must be properly installed, maintained & operated under normal conditions.
3. Kuryakyn shall not be liable for any consequential & incidental damages, including labor & paint, resulting from failure of a Kuryakyn product, failure to deliver, delay in delivery, delivery in nonconforming condition, or for any breach of contract or duty between Kuryakyn & a customer.
4. Kuryakyn products are often intended for use in specific applications. Kuryakyn makes no warranty if a Kuryakyn product is used in applications other than intended.
5. Kuryakyn electrical products are warranted for one (1) year from the date of purchase by the consumer. L.E.D.'s contained in components of Kuryakyn products will be warranted for defects in materials & workmanship for 3 years from the date of purchase whereas all other components shall be warranted for one (1) year.
6. All warranty claims must be directed to the place of purchase. Merchandise sold through internet auction sites or any other unauthorized reseller shall not carry a Kuryakyn warranty. If unsure, please contact the place of purchase to verify they are an authorized Kuryakyn reseller.

RETURN POLICY

Merchandise determined to be defective may be returned up to one year from the date of purchase. Returns must be processed through original seller. Returned merchandise for any other reason other than warranty claims must be in like new condition & subject to a 20% restocking fee. All returns are subject to inspection for determination of full or partial credit. Any returned part that shows evidence of being used or installed contrary to manufacturer's instructions, &/or subjected to improper handling, packaging or return shipping by the customer, will not be eligible for exchange, refund or warranty consideration. All returned electrical items will be inspected & tested. If electrical item is deemed functional, no credit will be issued & item will be returned. All sales are final on discontinued or closeout merchandise.

©2015 KURYAKYN HOLDINGS, LLC ALL RIGHTS RESERVED

KURYAKYN, KURYAKYN K logo and the marks appearing on this instruction sheet are registered and common law trademarks of Kuryakyn Holdings except noted third-party trademarks. A full listing of trademarks and trademark registrations owned by Kuryakyn Holdings can be found at www.kuryakyn.com/legal-notice.

Emissions Notice: The California Air Resources Board (CARB) does not permit the use of aftermarket emission-related parts(s) that alter the performance of OEM emission-related devices unless CARB has issued an Executive Order, other than on racing vehicles on closed courses. Check your local laws and manufacturer's information.

Listed Manufacturers and product model names are for reference only. All product and company names are trademarks or registered trademarks of their respective holders. Use of them does not imply any affiliation with or endorsement by them. All specifications are subject to change without notice.

For additional information on third-party product and company names, please consult our Web page at www.kuryakyn.com/legal-notice