



Custom Dynamics® ProBEAM® LED Halo Fog Lamps
Installation Instructions

We thank you for purchasing the Custom Dynamics® ProBEAM® LED Halo Fog Lamps. Our products utilize the latest technology and high quality components to ensure you the most reliable service. We offer one of the best warranty programs in the industry and we back our products with excellent customer support, if you have questions before or during installation of this product please call Custom Dynamics® at 1(800) 382-1388.

Part Number: PB-FOG-HD-B, PB-FOG-HD-C

- Package Contents:**
- ProBEAM® LED Halo Fog Lamp (2)
 - Wiring Harness
 - Chrome Wire Tie (10)
 - Black Wire Tie (10)
 - Isopropyl Alcohol Wipe
 - Instructions



Fits: 1996-2010 Softail® (Except Rocker), 1997-2011 Dyna®, 1999-2003 Sportster®, 1997-2013 Harley-Davidson® Electra Glide, Ultra Classic, Ultra Limited models (including CVO™), Road King (FLHR), Road King Classic (FLHRC), Road Glide Ultra (FLTRU) and Road Glide Ultra CVO™ (FLTRUSE), 1997-2009 Road Glide Standard (FLTR), 2006-2009 Street Glide (FLHX) and 2010-2013 Tri Glide®.

- Installation:**
1. Remove the seat and disconnect the motorcycle's negative (-) battery cable from the battery.
 2. Determine desired place to mount the driving lights. For optimal performance, it is recommended the fog lamps be mounted horizontally on the outermost section of the engine guard by means of a mounting clamp (not included). Refer to Photo 1.
 3. Install the ProBEAM® LED Halo Fog Lamp mounting stud into the clamp and secure to the mounting clamp as shown in Photo 1.

ATTENTION

Please read all Information below before Installation

CAUTION: Unit is HOT when operating, DO NOT TOUCH.

Warning: To prevent possible electrical shock, disconnect the negative Battery terminal before installing this product.

Important: This product is designed and intended for use as auxiliary lighting only. It is NOT intended to replace any original equipment lighting installed on the vehicle and should not be used for that purpose. This product must be wired so that it does not interfere with any original equipment lighting.

Note: Mounting studs are 5/16" in diameter, please verify your mounting clamp hole before installation.

Note: Fog lamps are setup to be mounted in a horizontal position. For vertical mounting (perpendicular to the ground) the optics will need to be rotated 90 degrees. To prevent damage to the unit, please refer to the video at <https://tinyurl.com/y27e5fdy> before attempting to rotate the optics. Refer to Photo 3 on Page 2 for mounting orientation.



4. Route wiring of the ProBEAM® LED Halo Fog Lamp under the seat. Use the provided wire ties to secure the wire to prevent damage. When routing the wire, add a drip loop to prevent water from running back into the Fog Lamp. Refer to Photo #2 on Page 2.

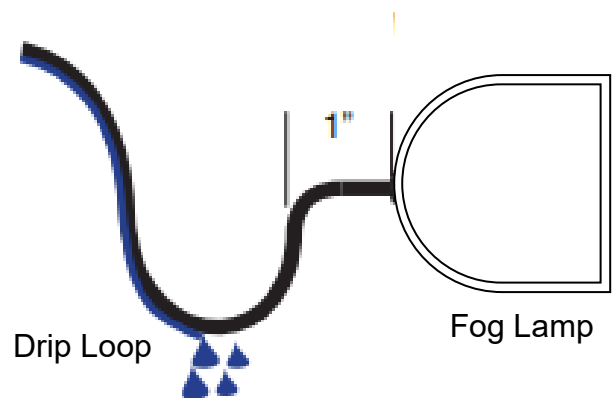
Questions? Call us at: 1 (800) 382-1388 M-TH 8:30AM-5:30PM / FR 9:30AM-5:30PM EST

Installation Instructions - Page 2

Installation:

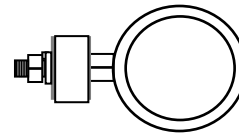
5. Locate and disconnect the bike's rear lighting harness under the seat. Install the ProBEAM® LED Halo Fog Lamp wiring harness in-line with the bike's rear lighting harness.
6. Mount the ON/OFF switch, on the Fog Lamp wiring harness, in a convenient location with the installed double-sided tape. Clean the location with the isopropyl alcohol wipe and allow to dry.
7. Connect the wires from the individual fog lamps to the Fog Lamp wiring harness.
8. Connect the battery lead from the Fog Lamp wiring harness to the positive (+) battery terminal .
9. Reconnect the motorcycle's negative (-) battery cable from the battery. Test function and adjust aim of lighting as needed. **CAUTION:** Fog Lamps are HOT while in operation, wear protective hand gear before making any adjustments to the Fog Lamps. Make sure they are tight before riding

2

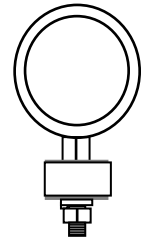


3

Mounting Orientation



Horizontal



Vertical