

## Items Supplied >

1 - FRONT HEADPIPE AND HEATSHIELD  
1 - REAR HEADPIPE COLLECTOR ASSEMBLY AND HEATSHIELD  
1 - LEFT REAR CROSSOVER PIPE AND HEATSHIELD  
1 - BRACKET, FRONT HEADPIPE SUPPORT  
1 - BRACKET, CROSSOVER PIPE SUPPORT  
1 - FLOORBOARD MOUNT SPACER PLATE  
1 - CLAMP, FRONT HEADPIPE SUPPORT  
8 - CLAMP, HOSE HS-24  
1 - CLAMP, HOSE HS-36  
1 - THICK 3/8" WASHER  
1 - THIN 3/8" WASHER  
1 - 3/8" X 1" CARRIAGE BOLT  
1 - 3/8" NYLOCK NUT

2 - 1/4 ALLEN BOLTS  
2 - 1/4 FLAT WASHERS  
2 - CLAMP, 27-61 MSC

## Application(s) >

HARLEY:  
DRESSER 17-18

## Instruction Manual >

6255DBRB

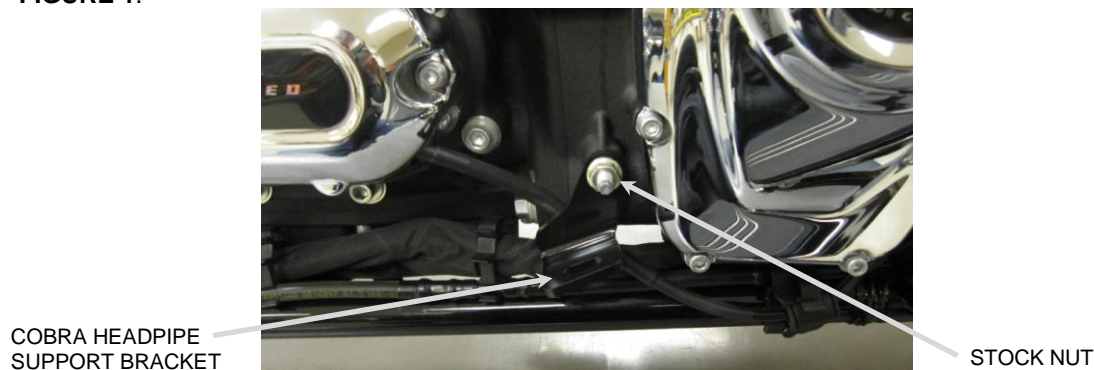
Page 1 of 5

**PRIOR TO INSTALLATION, MAKE SURE YOUR STOCK HEADPIPE GASKETS ARE IN GOOD CONDITION. IF YOU HAVE ANY DOUBTS AS TO THEIR CONDITION, REPLACE THEM.**

**\*\*\*NOTE: This system is equipped with extra O<sub>2</sub> sensor bungs (M18 X 1.5 threads) towards the front of the headpipes, nearest the cylinders, for aftermarket tuning purposes. DO NOT REMOVE the bung plugs unless installing extra O<sub>2</sub> sensors for tuning purposes.**

**Read all instructions carefully and completely before installing your new exhaust system!**

1. Remove the saddle bags, right side cover, and right front floorboard from the frame.
2. Unplug the O<sub>2</sub> sensors on the front and rear headpipes from the motorcycle wire harness.
3. Remove the stock exhaust system being careful not to damage the headpipe gaskets. If the headpipe gaskets are in good condition they do not need to be removed from the cylinders. Remove and save the flanges, nuts, retaining rings, muffler clamps, muffler mount bolts, crossover bracket bolts, and O<sub>2</sub> sensors from the stock exhaust. Label the O<sub>2</sub> sensors front and rear to ensure they will be installed on the proper headpipe.
4. Remove the stock exhaust mount bracket.
5. Install the supplied headpipe support bracket using the stock nut. See **FIGURE 1**. Lightly snug the nut but **DO NOT TIGHTEN** so the bracket can be adjusted. The bracket should be positioned at a slight angle. See **FIGURE 1**.

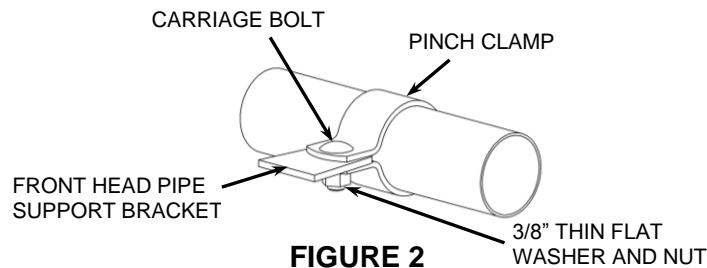


**FIGURE 1**

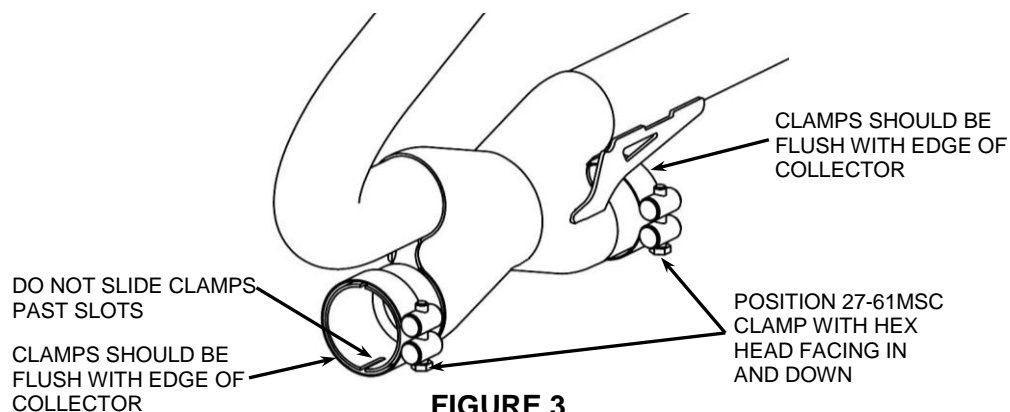
Continued on Page 2

**DISCLAIMER: NOT LEGAL FOR SALE OR USE IN CALIFORNIA ON ANY POLLUTION CONTROLLED MOTOR VEHICLES.**

6. Install the stock flanges, retaining rings and O<sub>2</sub> sensors onto the supplied front and rear headpipes. Be sure to install the front O<sub>2</sub> sensor on the front headpipe and the rear O<sub>2</sub> sensor on the rear headpipe.
7. Install the front headpipe (with stock gasket in place) onto the front cylinder using the stock nuts. Snug the nuts but **DO NOT TIGHTEN** at this time.
8. Slide the supplied pinch clamp over the front headpipe making sure the square hole on the clamp is facing up and towards the inside. Position the clamp over the support bracket so that the pinch clamp captures both sides of the bracket. See **FIGURE 2**. Insert the supplied 3/8" carriage bolt through the top of the pinch clamp and support bracket. Install the 3/8" thin flat washer and nut onto the bottom of the carriage bolt but **DO NOT TIGHTEN** at this time. Leave the nut loose so the headpipe can be adjusted.

**FIGURE 2**

9. Position (2) of the supplied #27-61 MSC muffler clamps onto the rear headpipe collector assembly inlet and outlet. The hex head of both clamps should be inward and down. See **FIGURE 3**. (NOTE: The clamps should be flush with the end of the inlet and outlet when tightened. See **FIGURE 3**. If the clamps are slid past the slots on the inlet and outlet the clamps will not tighten properly).

**FIGURE 3**

(INWARD SIDE OF COLLECTOR)

10. Install the rear headpipe collector assembly (with stock gasket in place) onto the rear cylinder and on to the front headpipe. Make sure the front headpipe is pushed in as far as possible into the rear headpipe collector assembly inlet. Use the stock nuts to fasten the headpipe to the cylinder. Snug the nuts but **DO NOT TIGHTEN** at this time. See **FIGURE 4**.
11. Install the left rear crossover pipe onto the rear headpipe collector assembly making sure it slides into the outlet of the rear headpipe collector assembly outlet as far as possible. See **FIGURE 4**.

Continued on Page 3

**NOTE:** Arrows point to the position of the hex head of the clamps.

REAR CROSSOVER PIPE



27-61 MSC CLAMP

**FIGURE 4**

FRONT HEADPIPE SUPPORT

12. Install the supplied crossover support bracket to the stock mounting location using the (2) stock allen bolts. Lightly snug the bolts but **DO NOT TIGHTEN** at this time. Adjust the crossover pipe fore and aft so the mount on the crossover assembly rests flush against the support bracket. Then push up lightly on the left side of the crossover assembly to align the bracket and insert the (2) supplied allen bolts with flat washers. Lightly snug the allen bolts but **DO NOT TIGHTEN** at this time. See **FIGURE 5**. **IMPORTANT: DO NOT** force the crossover pipe forward or backward or up and down to get it into position. If a lot of force is needed to align the crossover pipe and support bracket then adjust the rear headpipe collector assembly until it will align with only enough force to counter act the weight of the left side of the crossover assembly. Also, Make sure the crossover pipe has clearance all around and does not make contact with the transmission pan. Adjust as needed while bolts are loose.



STOCK BOLTS

CROSSOVER PIPE

COBRA CROSSOVER SUPPORT BRACKET

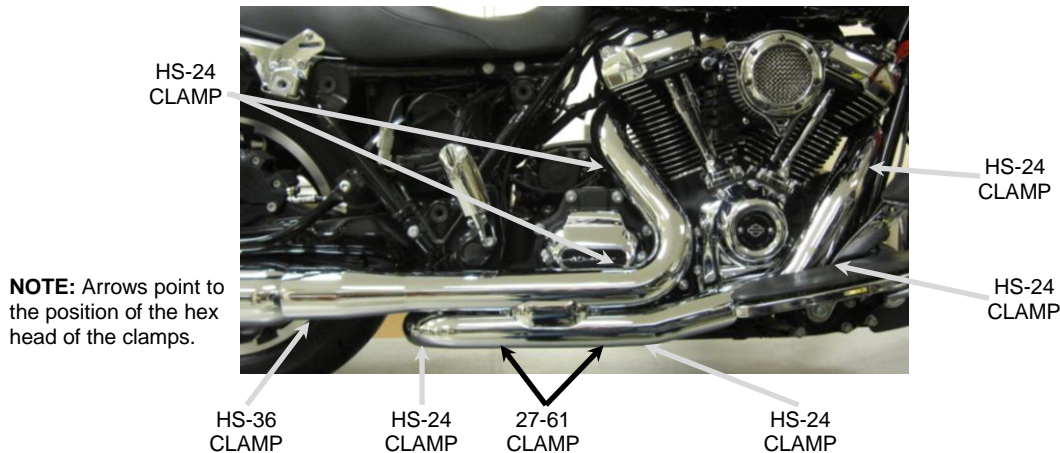
SUPPLIED ALLEN BOLTS AND WASHERS

**FIGURE 5**

13. Reinstall the mufflers onto the headpipe assembly and reinsert the (2) stock 5/16-inch bolts into each rear muffler mount. **Do not tighten** clamps or bolts.
14. Make sure the front headpipe, rear headpipe collector assembly, left rear crossover pipe, and mufflers are aligned properly and tighten the (4) allen bolts on the crossover support bracket. See **FIGURE 5**.
15. Then fully tighten the flange nuts on the exhaust port studs, followed by the nut for the 3/8" carriage bolt on the front headpipe support clamp and the nut on the front headpipe support bracket. See **FIGURE 2**.
16. Next fully tighten the (2) 27-61MSC clamps on the rear headpipe collector assembly. (NOTE: The clamps should be flush with the end of the crossover assembly inlets when tightened. See **FIGURE 3**. If the clamps are slid past the slots on the crossover assembly inlet the clamps will not tighten properly).

Continued on Page 4

17. Plug the O<sub>2</sub> sensors back into the motorcycle wire harness and route the wires away from the exhaust in the same manner as stock.
18. Remove the heatshields and hose clamps from packaging. Unscrew the hose clamps and feed the tail end of the clamps through the clips on the inside of the heatshield so the screws are accessible with a screwdriver once the heatshield is installed. The large HS-36 hose clamp goes on the rear clip on the rear heatshield. See **FIGURE 6 & 8** for proper positioning of the clamps on the heatshields. (**NOTE: The arrows point to the positioning of the hex head of the clamps.** The hex head of the clamps should be accessible for tightening but not visible when the heatshields are mounted to the pipes.)
19. Install the right rear heatshield over the rear headpipe. (Hint: Spread the hose clamps apart slightly to make it easier to slide them over the headpipes.) Align the heatshield with the headpipe and the collector heatshield. There should be an even gap around the collector heatshield. Snug the clamps but **DO NOT TIGHTEN** at this time. See **FIGURE 6 & 7**.
20. Install the right front heatshield over the right front headpipe. (Hint: Spread the hose clamps apart slightly to make it easier to slide them over the headpipes.) Align the heatshield with the headpipe and the collector heatshield. There should be an even gap around the collector heatshield. If the heatshield does not align well with the collector heatshield then the rear crossover pipe may need to be loosened and pushed forward or backward. When the heatshield is aligned properly snug the clamps but **DO NOT TIGHTEN** at this time. See **FIGURE 6 & 7**.
21. If the heatshields will not align properly with the collector heatshield then the collector heatshield may need to be loosened and moved forward or backward. Loosen the two button head bolts to adjust the collector heatshield forward or backward. See **FIGURE 7**.



**FIGURE 6**

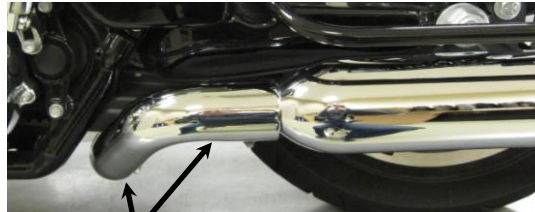


**FIGURE 7**

Continued on Page 5

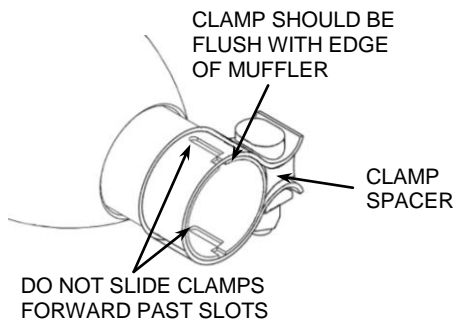
23. Place left rear heatshield in position on the crossover assembly on the left side of the motorcycle. (Hint: Spread the hose clamps apart slightly to make it easier to slide them over the headpipes.) Align the heatshield with the crossover assembly and snug the clamps but **DO NOT TIGHTEN** at this time. See **FIGURE 8**.

**NOTE:** Arrows point to the position of the hex head of the clamps.

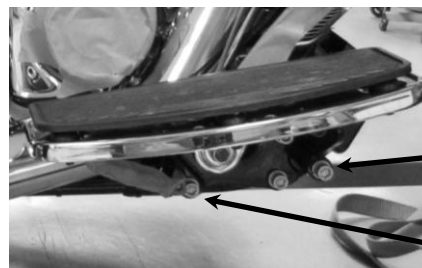


HS-24 CLAMP **FIGURE 8**

24. Adjust the mufflers fore and aft to align the front of the mufflers with the rear of the heatshields. Make sure there is a small gap between the front of the mufflers and the heatshields. Rotate the mufflers so they are level with the ground and then tighten the muffler mounting bolts and the clamps. (NOTE: The clamps should be flush with the end of the muffler inlet when tightened. If the clamps are slid past the slots on the muffler inlet the clamps will not tighten properly). See **FIGURE 9**.
25. Make sure the heatshields are aligned properly with the collector heatshield and that the small gap is maintained from the previous step and then tighten all hose clamps securing the heatshields.
26. Insert the supplied floorboard spacer plate between the rear floorboard mount and the frame, then align the dowel pin and reinstall the allen bolt. Tighten to factory specifications. See **FIGURE 10**.
27. Remove the allen bolt from the right front floorboard mount. Place the supplied thick washer between the front floorboard mount and the frame. Reinstall and tighten the allen bolt to factory specifications. See **FIGURE 10**.



**FIGURE 9**



**FIGURE 10**

INSTALL THICK 3/8" FLAT WASHER ON FRONT MOUNT

INSTALL SPACER PLATE ON REAR MOUNT

28. Reinstall any other previously removed items. Tighten to factory specifications.
29. Make sure all the hardware (brackets, headpipes, heatshields, mufflers and floorboards) have been tightened appropriately.
30. **IMPORTANT:** Before starting your engine remove all fingerprints from all exhaust surfaces. To clean your black exhaust system use a liquid based soap detergent, such as dishwashing soap applied with a soft cloth and rinse with clean water. Note: Avoid abrasive cleaning methods such as granular or dry cleansers, simple green, scotch-brite or steel wool pads. Abrasives may breach the coating and shorten life.

**IMPORTANT:** If your motorcycle is equipped with fuel injection it is recommended that you install a Cobra Fi2000® Digital Fuel Processor with your Cobra exhaust system, (Cobra Part#: 692-1631CL or 692-1631B).

**DISCLAIMER: NOT LEGAL FOR SALE OR USE IN CALIFORNIA ON ANY POLLUTION CONTROLLED MOTOR VEHICLES.**

DOCUMENT NO. 0018 REV. A