



INSTALLATION

MACH 2 HORN COVER

7297

PARTS INCLUDED

- 1 Mach 2 Horn Cover—Black with Chrome Mesh
- 1 Horn Bracket—Chrome
- 1 Hardware Kit Containing:
 - 3 #8-32 X 1/2" Socket Head Cap Screws
 - 3 #8 Lock Washers
 - 3 #8 Flat Washers
 - 1 6" Cable Tie
 - 1 Kuryakyn Emblem
 - 1 Zombie Emblem
- 1 Installation Instructions

Please read and understand entire instructions before starting installation.

THANK YOU FOR CHOOSING KÜRYAKYN!

IN ORDER TO PROTECT YOU AND OTHERS FROM POSSIBLE INJURY AND/OR PROPERTY DAMAGE OR LOSS, PLEASE PAY CLOSE ATTENTION TO ALL INSTRUCTIONS, WARNINGS, CAUTIONS AND NOTICES REGARDING THE USE AND CARE OF THIS PRODUCT.

WARNING THIS INDICATION ALERTS YOU TO THE FACT THAT IGNORING THE CONTENTS DESCRIBED HEREIN CAN RESULT IN POTENTIAL DEATH OR SERIOUS INJURY.

NOTICE This indication alerts you to the fact that ignoring the contents described herein may negatively affect product performance and functionality.

CAUTION This indication alerts you to the fact that ignoring the contents described herein can result in potential injury.

NOTICE IF INSTALLING THIS PRODUCT FOR ANOTHER PARTY, PLEASE MAKE SURE THEY RECEIVE THIS COPY OF THE INSTALLATION INSTRUCTIONS SO THEY ARE AWARE OF THE IMPORTANT INFORMATION CONTAINED IN THEM.

TOOLS SUGGESTED

Set of Hex Wrenches, Set of Standard and Metric Combination Wrenches, Red Thread Locker
STRICTLY OBSERVE THE FOLLOWING GUIDELINES IN ORDER TO USE THE PRODUCT PROPERLY AND AVOID POTENTIALLY DANGEROUS ACCIDENTS.

STEP 1 Read and understand all steps in the instructions before starting the installation. Park the motorcycle on a hard, level surface and turn off the ignition. Let cool.

NOTE: Pictures shown of Chrome parts. Installation of Black parts will be the same.

WARNING YOU WILL BE WORKING AROUND THE ENGINE AND EXHAUST SYSTEM DURING INSTALLATION. ENSURE THAT THE ENGINE AND EXHAUST SYSTEM HAVE FULLY COOLED TO PREVENT INJURY.

CAUTION Avoid potential electrical shock! Disconnect the battery before starting this procedure.

CUSTOMER SERVICE

877.370.3604 (toll free)

INSTALLATION QUESTIONS

techsupport@kuryakyn.com
or call 715.247.2983

LIMITED WARRANTY

Kuryakyn warrants that any Kuryakyn products sold hereunder, shall be free of defects in materials and workmanship for a period of one (1) year from the date of purchase by the consumer excepting the following provisions:

- Kuryakyn shall have no obligation in the event the customer is unable to provide a receipt showing the date the customer purchased the product(s).
 - The product must be properly installed, maintained and operated under normal conditions.
 - Kuryakyn makes no warranty, expressed or implied, with respect to any gold plated products.
 - Kuryakyn shall not be liable for any consequential and incidental damages, including labor and paint, resulting from failure of a Kuryakyn product, failure to deliver, delay in delivery, delivery in nonconforming condition, or for any breach of contract or duty between Kuryakyn and a customer.
- Kuryakyn products are often intended for use in specific applications. Kuryakyn makes no warranty if a Kuryakyn product is used in applications other than intended.
- Kuryakyn electrical products are warranted for one (1) year from the date of purchase by the consumer. L.E.D.'S contained in components of Kuryakyn products will be warranted for defects in materials and workmanship for 3 years from the date of purchase where as all other components shall be warranted for one(1) year. This includes, but is not limited to; control modules, wiring, chrome & other components.
- Kuryakyn makes no warranty of any kind in regard to other manufacturer's products distributed by Kuryakyn. Kuryakyn will pass on all warranties made by the manufacturer and where possible, will expedite the claim on behalf of the customer, but ultimately, responsibility for disposition of the warranty claim lies with the manufacturer.

ABOUT OUR CATALOG

For purchasing Kuryakyn® products, you can receive a complete catalog free of charge. Send the Proof-of-Purchase below with your address to: Kuryakyn, P.O. Box 339, Somerset, WI 54025. Please indicate either Accessories Catalog for Harley-Davidson® or GL & Metric Cruisers.

Be sure to ask your local dealer about other Kuryakyn® products, the motorcycle parts and accessories designed for riders.

©2005 Kuryakyn USA® All Rights reserved.



kuryakyn.com

NOTICE

A factory service manual may be helpful in performing this installation. Do not attempt to perform this installation if you are not confident in your ability to complete all of the steps in the procedure; consult a trained technician.

Küryakyn®

- STEP 2** Test the horn. The horn should sound the same with the new Mach 2 Cover installed. Remove the seat and disconnect the negative wire from the battery.
- STEP 3** Remove the acorn nut and washer that attaches the stock horn to the rubber mount on the motorcycle. PIC 1 Set this hardware aside, it will be reused. Unplug the wires from the back of the horn and remove the horn from the motorcycle.
- STEP 4** Remove the nut that secures the horn to the stock mount and cover (PIC 2), Pay attention to the position of the wire connections and the bell. This will be installed on the new bracket in the same orientation. Set the nut aside, it will be reused. Remove the horn from the stock cover.
- STEP 5** Place a drop of RED thread locker on the threads of the OEM nut. Insert the stud on the back of the horn through the Mach 2 mounting bracket as shown and thread the OEM nut onto the stud. PIC 3 Test fit the Mach 2 Cover on the bracket to ensure that the bell of the horn is not touching the sides of the Cover and **tighten the nut to 90-100 IN/LBS.**

NOTE: Some later model horns may have a silicone plug on the back that may contact the new bracket. This **WILL NOT** affect the horn's sound or performance if it contacts the bracket.

NOTICE

DO NOT over-tighten the OEM nut on the horn stud. Over-tightening may cause damage to the horn.

- STEP 6** Attach the front horn cover to the horn bracket using the included flat washers, lock washers and socket head cap screws. PIC 3
- STEP 7** Connect the wires to the horn. The horn is not polarity sensitive, so either wire can go to either post. Attach the new Mach 2 Horn Cover to the motorcycle with the hardware removed in Step 2. PIC 4 Route the horn wires to the mounting bracket that the horn attaches to and secure with the included cable tie. PIC 5
- STEP 8** Clean the emblem location on the Mach 2 Horn Cover with an ammonia based cleaner such as window cleaner. Rub the backing of either the Küryakyn emblem or the Zombie emblem. Remove the backing and attach the emblem to the location on the Mach 2 Horn Cover. PIC 4

NOTICE

Secure all wiring away from any moving parts, pinch points or extreme heat. Küryakyn WILL NOT issue a warranty on any electrical component that fails due to pinched, crimped, broken, abraded, melted or frayed wires.

- STEP 9** Reconnect the negative wire to the battery and replace the seat.

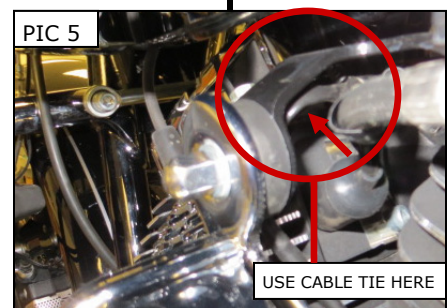
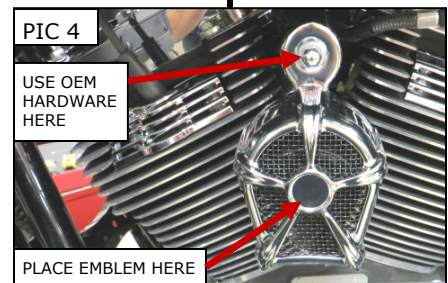
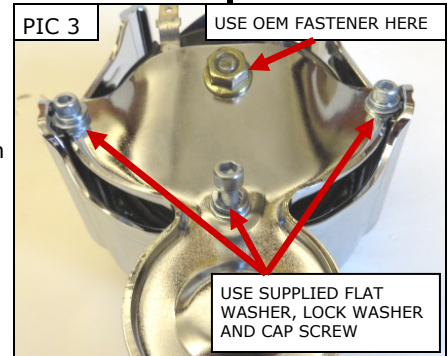
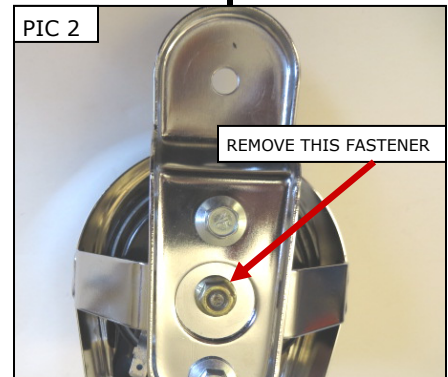
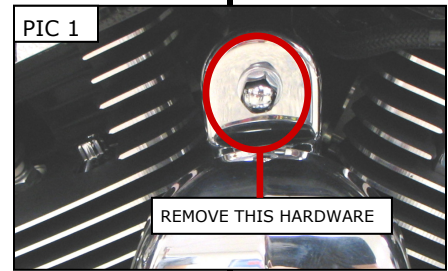
WARNING

AFTER INSTALLING THE SEAT, PULL UP ON IT TO ENSURE IT IS LOCKED INTO PLACE. A LOOSE SEAT CAN SHIFT AND CAUSE LOSS OF CONTROL RESULTING IN SERIOUS INJURY OR DEATH.

- STEP 10** Test the horn. If the horn sounds muffled, recheck the torque on the nut holding the horn to the new bracket and ensure the bell of the horn is not touching the Mach 2 Cover. If this does not improve the sound of the horn, it may indicate that the horn is damaged and may need to be replaced.

NOTICE

It is the installer's responsibility to ensure that all of the fasteners (including pre-assembled) are tightened before operation of the motorcycle. Küryakyn will not provide warranty coverage on products or components lost due to improper installation or lack of maintenance. Periodic inspection and maintenance are required on all fasteners.



PAGE

2

Ride On!

MACH 2 HORN COVER

INSTALLATION