



PLUG & PLAY TRAILER WIRING HARNESS for H-D

7672

PARTS INCLUDED

- 1 Trailer Wiring Isolation Relay
- 1 H-D Trailer Sub Harness
- 1 Inline Fuse and "Y" Wire Assembly with Heat Shrink Covered Butt Connectors
- 1 Hardware Kit Containing:
 - 6 Black Nylon 8" Wire Ties
 - 1 1/4" Ring Terminal
 - 1 Dielectric Grease Pack
 - 2 1" X 2" Adhesive Backed Hook Strap
 - 2 1" X 2" Adhesive Backed Loop Strap
- 1 Alcohol Pad
- 1 Installation Instructions

Please read and understand entire instructions before starting installation.

THANK YOU FOR CHOOSING KÜRYAKYN!

IN ORDER TO PROTECT YOU AND OTHERS FROM POSSIBLE INJURY AND/OR PROPERTY DAMAGE OR LOSS, PLEASE PAY CLOSE ATTENTION TO ALL INSTRUCTIONS, WARNINGS, CAUTIONS AND ATTENTION NOTES REGARDING THE USE AND CARE OF THIS PRODUCT.

WARNING! THIS INDICATION ALERTS YOU TO THE FACT THAT IGNORING THE CONTENTS DESCRIBED HEREIN CAN RESULT IN POTENTIAL DEATH OR SERIOUS INJURY.

ATTENTION! This indication alerts you to the fact that ignoring the contents described herein may negatively affect product performance and functionality.

CAUTION! This indication alerts you to the fact that ignoring the contents described herein can result in potential injury or material damage.

TOOLS SUGGESTED

Set of Hex Wrenches, Combination Wrenches, Side Cutter, Electrical Tape, a Set of Screw Drivers, and a Test Light or Multi Meter

STRICTLY OBSERVE THE FOLLOWING GUIDELINES IN ORDER TO USE THE PRODUCT PROPERLY AND AVOID POTENTIALLY DANGEROUS ACCIDENTS.

STEP 1 Read and understand all steps in the instructions before starting the installation. Park the motorcycle on a hard, level surface and turn off the ignition.

NOTE: Installation shown on Touring model, other models may vary for relay placement.

ATTENTION! A factory service manual may be helpful in performing this installation. Do not attempt to perform this installation if you are not confident in your ability to complete all of the steps in the procedure; consult a trained technician.

CUSTOMER SERVICE

877.370.3604 (toll free)

INSTALLATION QUESTIONS

techsupport@kuryakyn.com
or call 715.247.2983

LIMITED WARRANTY

Kuryakyn warrants that any Kuryakyn products sold hereunder, shall be free of defects in materials and workmanship for a period of one (1) year from the date of purchase by the consumer excepting the following provisions:

- Kuryakyn shall have no obligation in the event the customer is unable to provide a receipt showing the date the customer purchased the product(s).
 - The product must be properly installed, maintained and operated under normal conditions.
 - Kuryakyn makes no warranty, expressed or implied, with respect to any gold plated products.
 - Kuryakyn shall not be liable for any consequential and incidental damages, including labor and paint, resulting from failure of a Kuryakyn product, failure to deliver, delay in delivery, delivery in nonconforming condition, or for any breach of contract or duty between Kuryakyn and a customer.
- Kuryakyn products are often intended for use in specific applications. Kuryakyn makes no warranty if a Kuryakyn product is used in applications other than intended.
- Kuryakyn electrical products are warranted for one (1) year from the date of purchase by the consumer. L.E.D.'S contained in components of Kuryakyn products will be warranted for defects in materials and workmanship for 3 years from the date of purchase where as all other components shall be warranted for one(1) year. This includes, but is not limited to; control modules, wiring, chrome & other components.
- Kuryakyn makes no warranty of any kind in regard to other manufacturer's products distributed by Kuryakyn. Kuryakyn will pass on all warranties made by the manufacturer and where possible, will expedite the claim on behalf of the customer, but ultimately, responsibility for disposition of the warranty claim lies with the manufacturer.

ABOUT OUR CATALOG

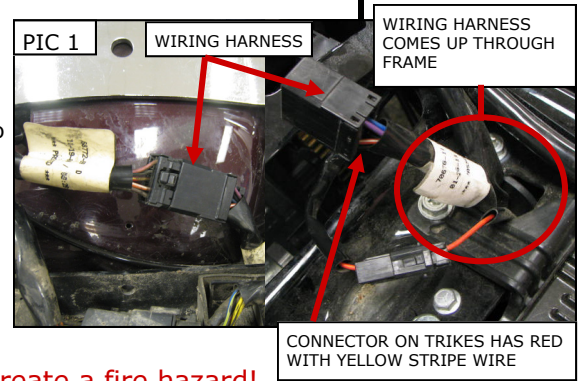
For purchasing Kuryakyn® products, you can receive a complete catalog free of charge. Send the Proof-of-Purchase below with your address to: Kuryakyn, P.O. Box 339, Somerset, WI 54025. Please indicate either Accessories Catalog for Harley-Davidson® or GL & Metric Cruisers.

Be sure to ask your local dealer about other Kuryakyn® products, the motorcycle parts and accessories designed for riders by riders.

©2005 Kuryakyn USA® All Rights reserved.



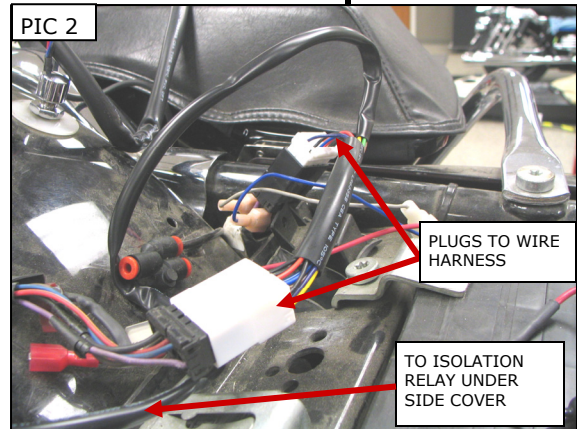
STEP 2 Remove the seat and locate the H-D main wiring harness. PIC 1 (On Trike models, locate the 8-pin connector from the main harness to the run-turn-brake controller. This is the input side of the controller, PIC 1, and the 8-pin connector will have a **RED** wire with a **YELLOW** stripe. It should be located on the left side under the passenger handrail.) Disconnect the wiring harness and plug the sub-harness into the ends of the main taillight harness. PIC 2



CAUTION! Always install the Isolation Relay Sub Harness upstream (before) of any existing multifunction control modules. Do not install the Isolation Relay Sub Harness between a module and the turn signals, as this will overload the module. Overloading will damage the module and may create a fire hazard!

ATTENTION! Kuryakyn recommends the use of dielectric grease on electrical connections

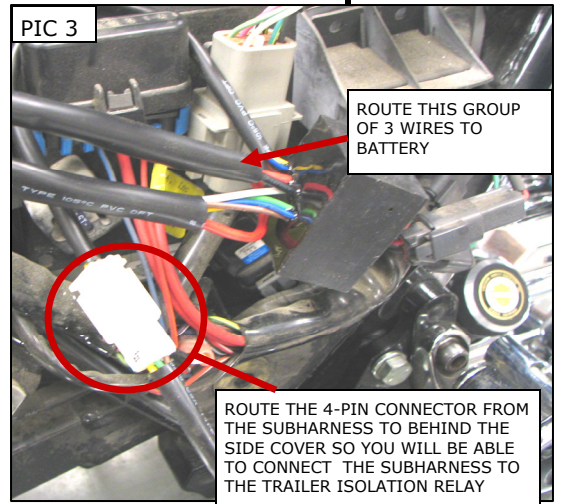
STEP 3 Take the 4-pin connector and route it under the frame rail and bring it out under the side cover of the bike. This connection will be used to supply the power to the trailer. PIC 2



STEP 4 Under the side cover, plug the Trailer Isolation Relay to the sub-harness. PIC 3

TRAILER ISOLATION WIRING HARNESS

STEP 5 Take the long red positive, red with a black stripe and the long black ground wire in the black sheathing and route them to the battery. Be cautious of where you route the wires, avoid moving parts or extreme heat. PIC 3

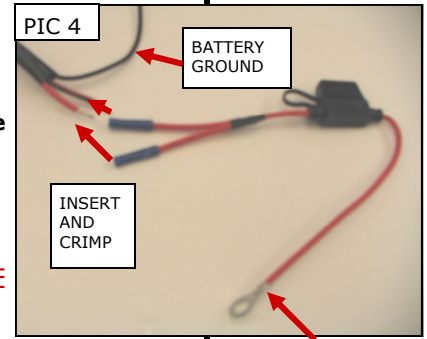


STEP 6 Take the red power wire and connect it to one end of the "Y" wire attached to the fuse holder with the butt connectors. PIC 4 Slide the wire into the end of the butt connector and crimp.

STEP 7 The red wire with a black stripe is a power wire that can be used for keyless entry power or interior lighting on the trailer. If your trailer **DOES NOT** need an extra power wire for accessory lighting, then **DO NOT** connect this to the other "Y" wire from the fuse holder. Wrap the butt connector on the unused red "Y" wire with electrical tape or heat shrink to prevent an unwanted short, as it will have power to it all the time, and secure it out of harms way. Proceed to Step 9.

WARNING: WHEN THE SINGLE RED WIRE WITH THE RING TERMINAL IS CONNECTED TO THE BATTERY IN STEP 9, THE RED WIRE WITH THE BUTT CONNECTOR WILL HAVE POWER AT THE BUTT CONNECTOR. **MAKE SURE IT IS CAPPED OFF AS IN STEP 7 BEFORE ATTACHING THIS WIRE TO THE BATTERY!**

STEP 8 If your trailer **DOES** need an extra power wire for accessory lighting, Take the red with black stripe power wire and connect it to the end of the second "Y" wire with the attached butt connector. PIC 4 Slide the wire into the end of the butt connector and crimp.

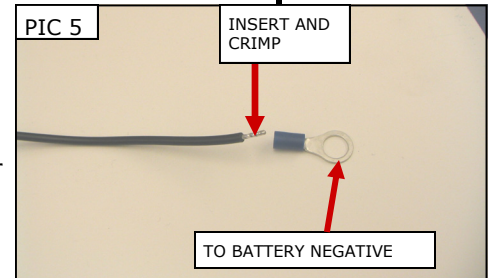


TO BATTERY POSITIVE REFER TO WARNING STEP 7 AND STEP 8 BEFORE CONNECTING

NOTE: If you would like to have "keyed" power to the red with black stripe wire, instead of constant power, use a test light to find a "keyed" wire on the bike and attach this wire to it. Be sure to cap off the unused butt connector on the "Y" wire from the fuse holder as in Step 7. Make sure that the added amperage from the trailer accessory will not overload the chosen circuit.

WARNING: WHEN THIS SINGLE RED WIRE WITH THE RING TERMINAL IS CONNECTED TO THE BATTERY IN STEP 9, THE RED WIRE WITH THE BLACK STRIPE WILL HAVE POWER AT THE OTHER END OF IT. **MAKE SURE IT IS CAPPED OFF AS THE RED WIRE IN STEP 7, OR ATTACHED TO THE TRAILER PLUG, BEFORE ATTACHING THIS WIRE TO THE BATTERY!**

STEP 9 Attach the single red wire from the other end of the fuse holder with the ring terminal to the positive side of the battery. PIC 4 Connect the long black ground wire to the negative on the battery using the supplied 1/4" ring terminal (you will need to crimp this to the black wire). PIC 5



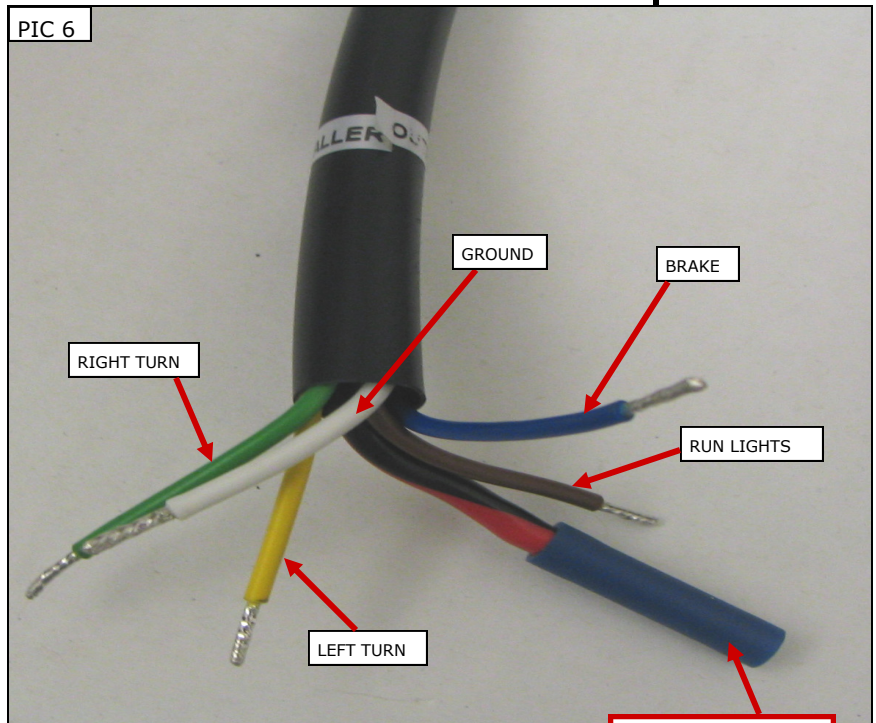
STEP 10 With the two (four pin) plugs connected in PIC 3, use a test light to check for proper function. Turn the key on and test both signals. (Yellow is left turn and Green is right turn) Brake lights (Blue) and Run light (Brown). The red wire with a black stripe is a power wire that can be used for keyless entry power or interior lighting on the trailer (Step 7 or Step 8). The white wire is ground. PIC 6

ATTENTION! Secure all wiring away from any moving parts, pinch points or extreme heat. Küryakyn **WILL NOT** issue a warranty on any electrical component that fails due to pinched, crimped, broken, abraded, melted or frayed wires.

STEP 11 Tie up any excess wire length with the provided cable ties. Locate an area on the bike that you will be able to mount the trailer isolation relay box. Take the provided 1" x 2" Hook Strap and the 1" x 2" Loop Strap and place one on the back of the trailer isolation relay and the other on the bike in a good and safe area that is out of harms way.

STEP 12 Wire up any style connector needed for your trailer application.

STEP 13 When you are satisfied with the wiring, re-install the saddlebag if needed, replace the seat, and secure it in the same order that it was removed in Step 2 of the sub harness installation instructions.



SEE WARNING STEP 8

WARNING! ENSURE PROPER TRAILER AND MOTORCYCLE LIGHT OPERATION BEFORE RIDING THE MOTORCYCLE. VISIBILITY IS A MAJOR CONCERN FOR MOTORCYCLISTS. TRAILER OR MOTORCYCLE LIGHT MALFUNCTION COULD RESULT IN DEATH OR SERIOUS INJURY.